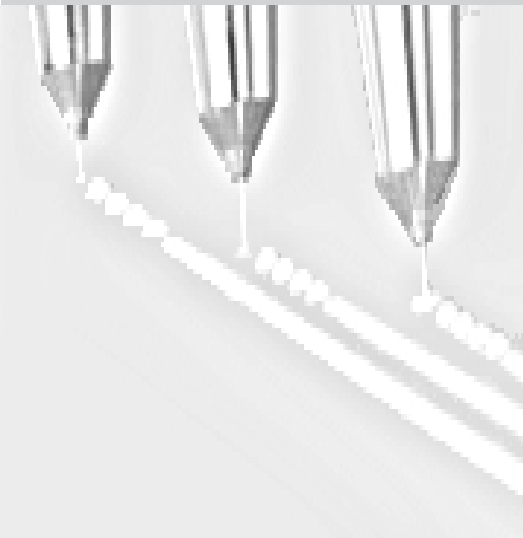




# Error Impossible...

our GTDC solution  
Glue Track Drop Control

## The innovative GTDC Glue-Track-Drop-Control from WST.



Glue nozzles

### The idea

The glue to be applied thru an extrusion system is controlled by glue sensors. The capabilities of the **WST Glue Track Drop Control** system based on the high-capacity and very small compact design are very versatile. In the field of the printing industry e.g. gluing of package inserts, CD packages or different cardboard productions as well as in other industrial sectors, the **WST** system is a great choice .

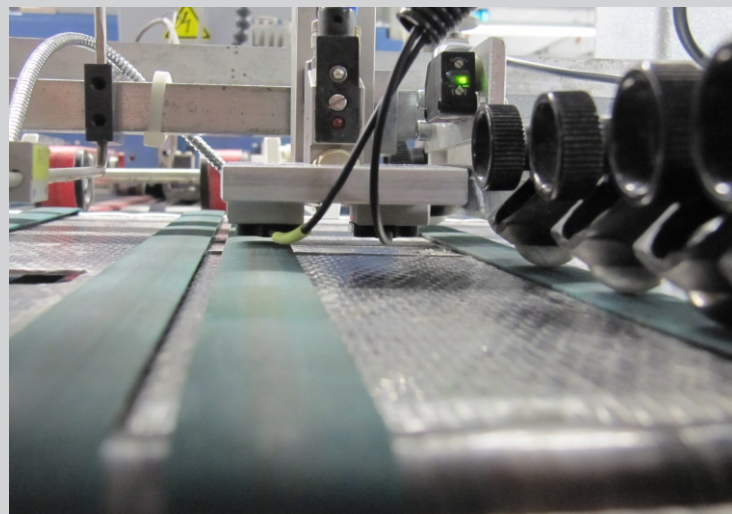
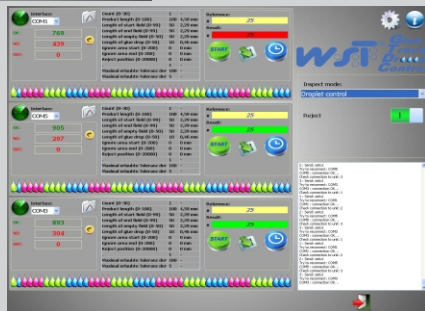
### The concept

The liquids ( Glue, Water, Colors, etc. ) to be detected are already controlled directly at the discharge underneath of the nozzle head. Problems causing of motions in the material ( e.g. paper cardboard, woods, etc. ) being applied to during production flow will be eliminated hereby. Length variations on drop- or beat applications will be monitored as well.



## The modules

A high power **WST 17"** touch screen computer with special **WST** software is connected thru a high-capacity connection with up to 5 **WST** glue sensors. The computer is responsible for the evaluation of the incoming data and the control of the complete system. The setting of the system is made very easy by using a modern touchscreen for the well arranged and user friendly menu navigation.



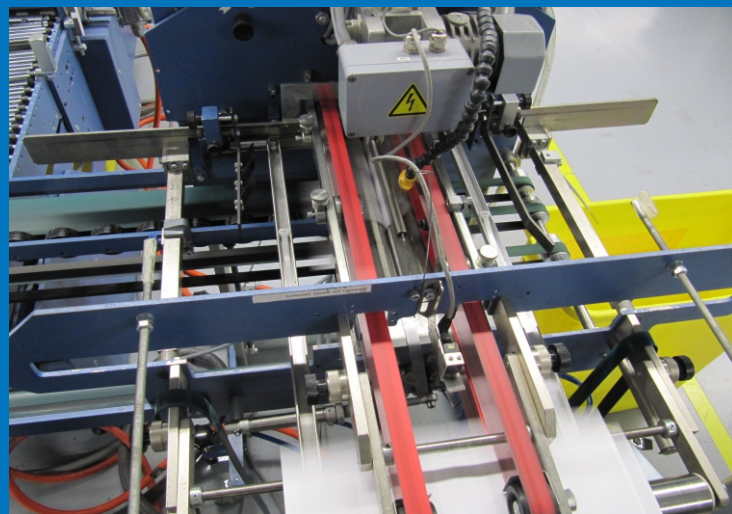
## The application

Every error detected by the glue sensors will be represented transparency on the monitor and signals, e.g. the stopping of the machine or the activation of a reject unit, can be defined by an intelligent interface.

## The result

The system is designed to detect any liquid being applied by an extrusion system. The benefit of the compact design from the glue sensor, realizes mounting in wherever needed space at the user applications. Optional online support as well as triggering of a mechanical reject unit is realizable at any time.

The **GTDC** and its versatile capabilities is designed to eliminate errors and drastically reducing costs.



**WST**, a German based company was founded in 1975 and is operating worldwide, manufacturing signature recognition systems. **WST** was the first German company that developed a zonal sensor: ( formally known as "Opticontrol" ) today available as "**OSC OPTO-SENSOR-CONTROL**"

**Print Finishing Partners** is the exclusive agent for **WST** in North America.

830 Richard Brown Blvd. Volo, IL 60073

T 941.350.4766, F 941.927.5934

[sales@printfp.com](mailto:sales@printfp.com)

**WST - North America**  
[www.printfp.com](http://www.printfp.com)